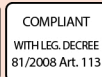


CAGE LADDERS MODULAR



Cage ladders:

Our cage ladders are built from modular elements of variable length with a through-rung attachment, guaranteeing solidity and safety. The ladders can be assembled using a bayonet system.

Anchoring uses dedicated brackets that ensure a distance of 150 mm from the wall. The cage is connected to the ladder in expansion nylon inserts and perforated junction plates.

Available in a single section up to 8 m or multiple sections with landing platforms. They have a cage start between 2.00 and 2.50 m. They can be customised with special brackets and accessories.

On request, we provide disassembled cage ladders to reduce the costs of shipment. Each package includes an instruction manual for assembly and maintenance.

Compliance with current regulations

Our cage ladders are manufactured in **compliance with Leg. Decree 81/2008**, which regulates the use of equipment for work at height, ensuring maximum safety for access on buildings and elevated structures.

On request, our ladders can also be made according to:

- **UNI 11962**

It lays down specifications for cage and non-cage ladders, for permanent use, with an inclination $\geq 75^\circ$, intended for access on buildings, infrastructures, works, artefacts and plants.

- **UNI EN ISO 14122**

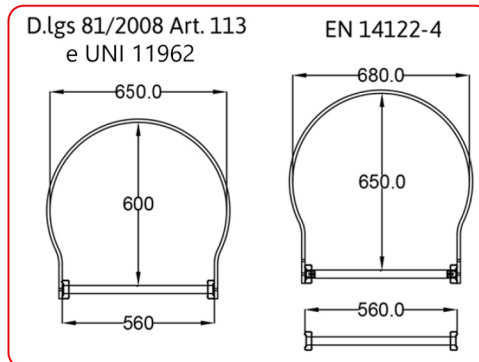
It regulates the design and construction of cage ladders for access to fixed and mobile machines.



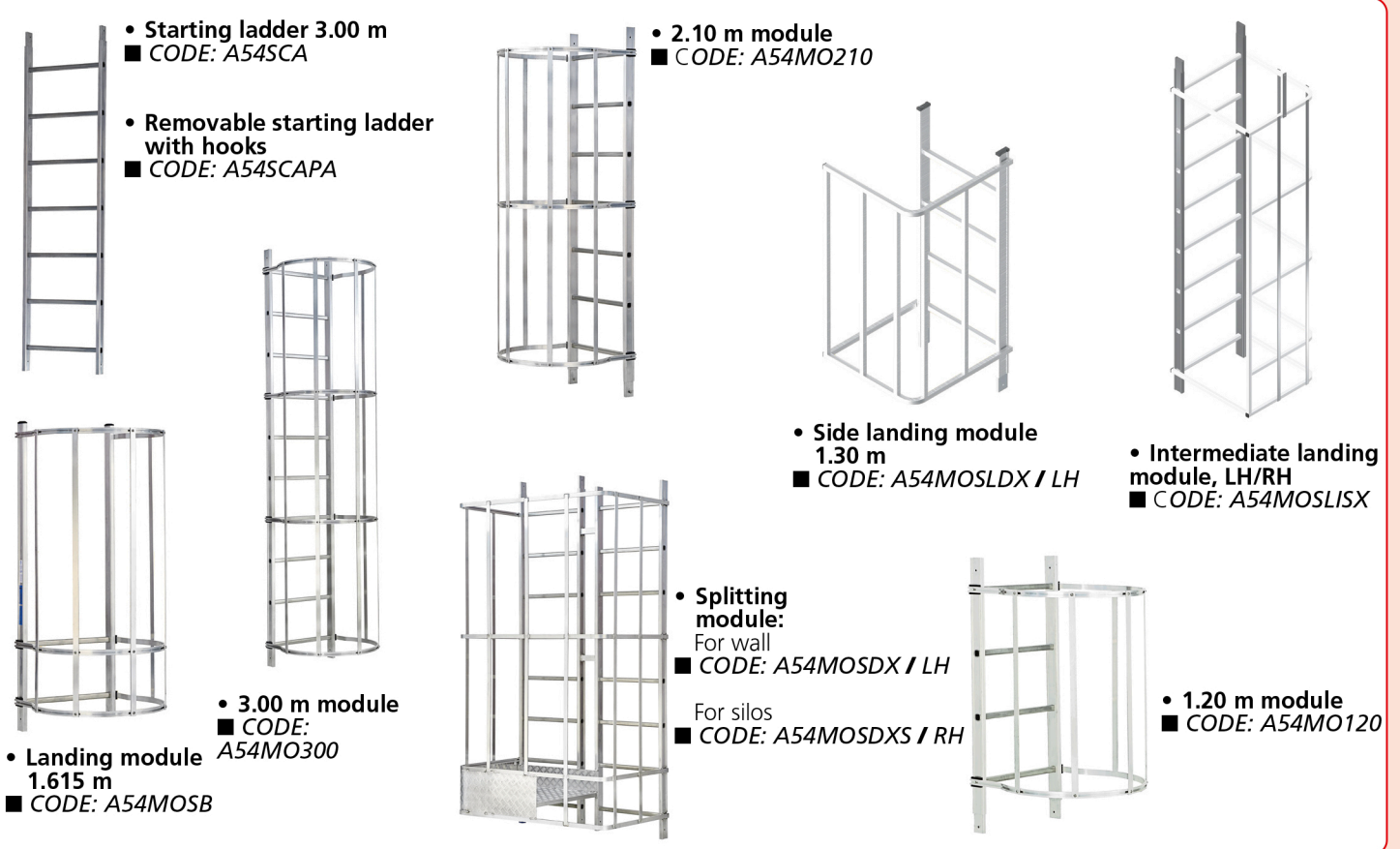
• **Safety belts**
■ **CODE: 1275I**



• **Fall arrest device**
■ **CODE: A54DIA**



• **Additional hoops:**
■ **CODE: A54CERCHI**
✓ **Price: € 90.50**



	H		MODULE			SPLIT (m 2,40)	STARTING LADDER	ADDITIONAL COMPONENTS			BRACKET PAIR
	LANDING	TOTAL	LANDING	1,20	2,10			3,00	LOOP	PLATE 328	
1 segments	3,00	4,16	1				2,535	1	5		3
	3,50	4,66	1	1*			1,835				3
	4,00	5,16	1	1			2,335				3
	4,50	5,66	1	1			2,835	1		5	3
	5,00	6,16	1		1		2,435	1	5		3
	5,50	6,66	1			1	2,035				3
	6,00	7,16	1	1	1		2,235				4
	6,50	7,66	1	1	1		2,735	1		5	4
	7,00	8,16	1	1		1	2,335				4
	7,50	8,66	1	1		1	2,835	1		5	4
	8,00	9,16	1		1	1	2,435	1	5		5
	8,50*	9,66	1			2	2,035				5
9,00*	10,16	1			2	2,535	1	5		5	
9,50*	10,66	1	1	1	1	2,735	1		5	5	
10,00*	11,16	1	1		2	2,335				5	
2 segments	8,50	9,67	1	1	1	1	2,335				7
	9,00	10,17	1	1	1	1	2,835	1		5	7
	9,50	10,67	1	1		1	2,435	1	5		7
	10,00	11,17	1		1	1	2,035				7
	10,50	11,67	1		1	1	2,535	1	5		8
	11,00	12,17	1			2	2,135				8
11,50	12,67	1	1	1	1	2,335				8	

* Ladders of 8.50 m to 10.00 m are best to be provided with an intermediate landing
 * A54MO120C: Module from 1.20 m with the first loop higher, to observe Leg. Decree 81/2008 (H starting ladder < 2.00 m

ACCESSORIES CAGE LADDERS



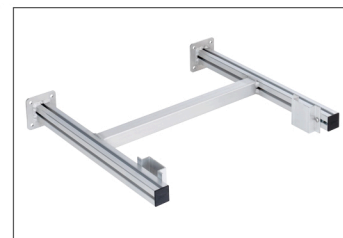
- **Pair of standard brackets**
Made to hold a distance of the ladder from the wall of 15 cm
■ **CODE: A54STA**



- **Pair of telescopic brackets**
Made to hold a distance of the ladder from the wall of 25 to 35 cm
■ **CODE: A54STATE**



- **Exit gate with automatic spring**
To prevent accidental access
■ **CODE: A54CAN**



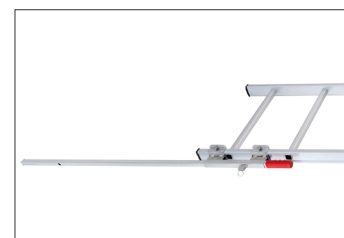
- **Cross brackets**
For distances up to 600 mm
■ **CODE: A54STACRO**



- **Intrusion protection hatch**
To prevent access inside the cage, prepared for closure with chain (not supplied)
■ **CODE: A54BOTOLA**



- **Exit handles**
For safe landing on platform
■ **CODE: A54MAN**



- **Removable exit handrails**
Useful if the end protection system cannot be implemented
■ **CODE: A54CORES**



- **Cross brackets**
For distances over 600 mm
■ **CODE: A54STACRO1**



- **Landing footbridge at height**
Footbridge of 60X60 cm, made of aluminium, ideal for landings at height that require overcoming obstacles.
■ **CODE: PASSRR60**

Available in versions:

- **With descent ladder inclined, with flat steps**
■ **CODE: A54SDGR**

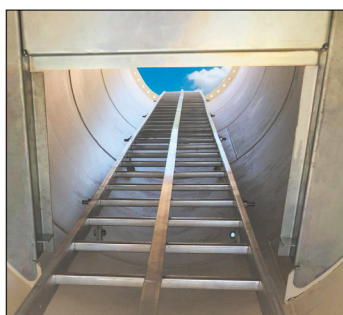
- **With descent ladder vertical, with rungs**
■ **CODE: A54SDPI**



- **Intrusion protection door**
Made of aluminium with frame covered with almond-patterned sheet metal with hatch at the top. Closing with side hinges.
■ **CODE: A54PORTA**



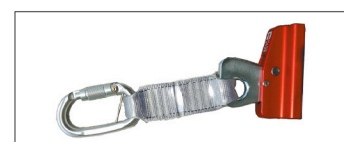
- **Intermediate landing**
Made of aluminium, it allows an operator to rest in the event of a very long climb
■ **CODE: A54PIANO**



- **Ladder for wind tower**
With central guide



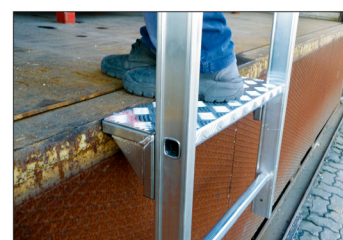
- **"T" guide for anchoring**
for the fall arrest device, in 6005 alloy, with sliding guide trolley.
■ **CODE: A54GUIDA**



- **Fall arrest device**
■ **CODE: A54DIA**



- **Adjustable feet**
■ **CODE: A54PT**



- **Exit rung**
Made of aluminium, 150 mm, it allows not to have an empty space between the ladder and the wall
■ **CODE: A54GRA**